



MONTHLY MEMBERSHIP PROGRESS REPORT

District 13 OH5

Results as of: 05/31/2018

GMT: CINDY GREGG

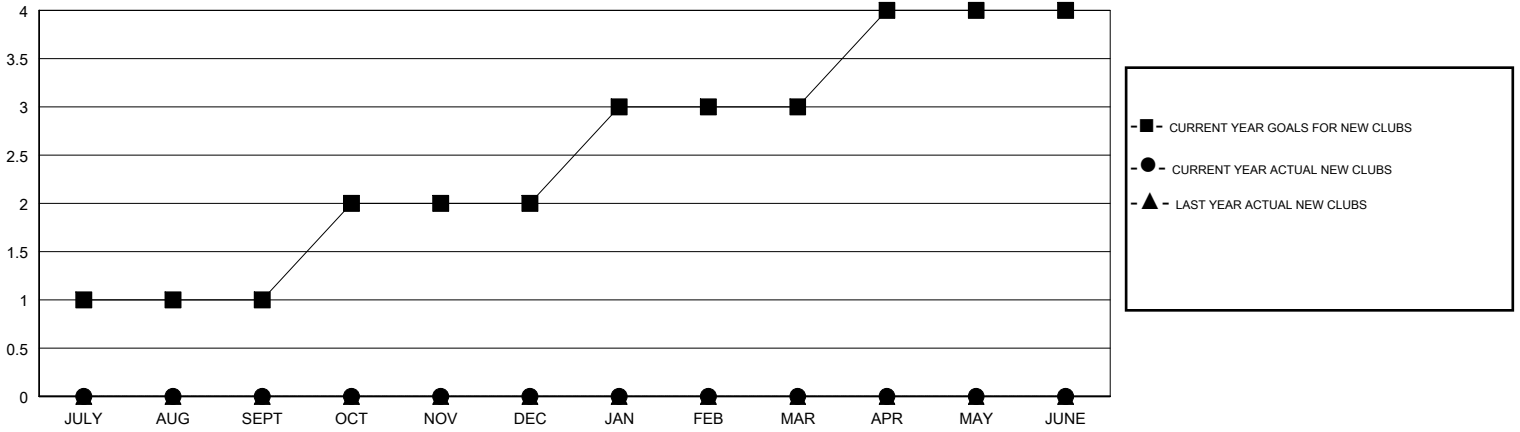
LOCATION OHIO

GMT CA

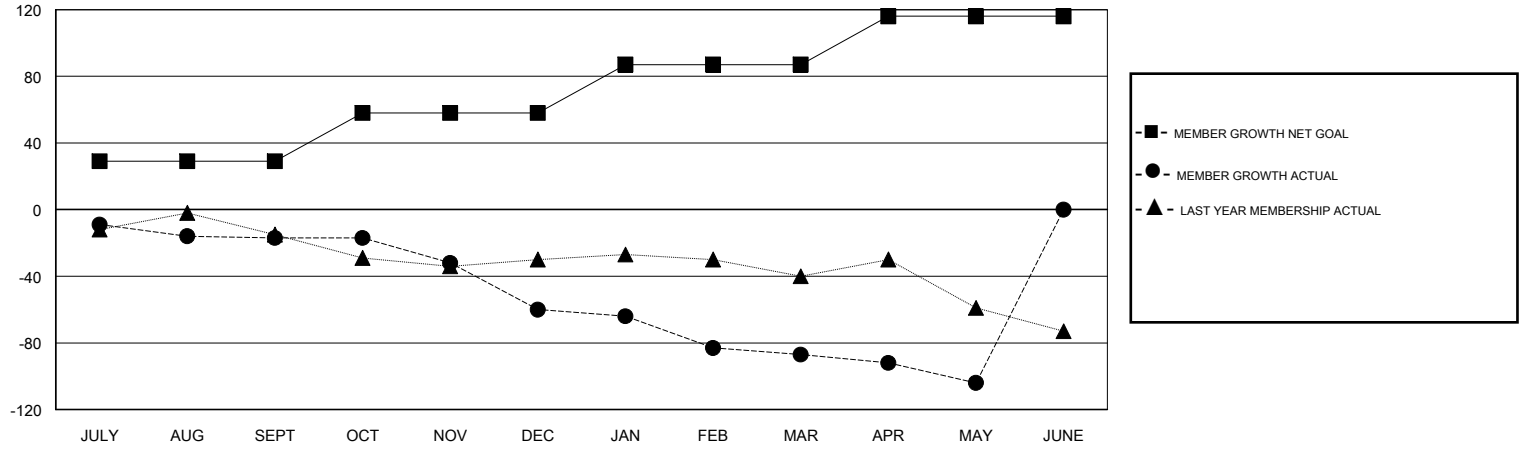
Clubs			
RESULTS FOR 2017-2018			
QUARTER	NEW CLUB GOAL	NEW CLUBS	DROPPED CLUBS
JULY/AUG/SEPT	1	0	0
OCT/NOV/DEC	1	0	0
JAN/FEB/MAR	1	0	1
APR/MAY/JUNE	1	0	0

Members			
RESULTS FOR 2017-2018			
QUARTER	MEMBER GROWTH NET GOAL	MEMBER GROWTH ACTUAL	DROPPED MEMBERS ACTUAL (including transfers)
JULY/AUG/SEPT	29	29	41
OCT/NOV/DEC	29	33	70
JAN/FEB/MAR	29	26	48
APR/MAY/JUNE	29	22	37

GOALS AND ACTUAL NEW CLUBS CUMULATIVE



GOALS AND ACTUAL MEMBERS CUMULATIVE



DROPPED CLUBS: 1	31 CLUBS OF 56 ADDED 1 OR MORE NEW MEMBERS	<u>GENDER DISTRIBUTION</u>	
DROPPED MEMBERS		MALE	1,170 (75.68%)
DECEASED	24	FEMALE	376 (24.32%)
CLUB CANCELLED	1	Women Percentage Fiscal Year Goal: 27%	
OTHER	171	TOTAL FAMILY UNIT MEMBERS	193
TOTAL	196	FAMILY MEMBERS PAYING HALF DUES	97

[CLICK HERE FOR CUMULATIVE MEMBERSHIP DATA](#)